

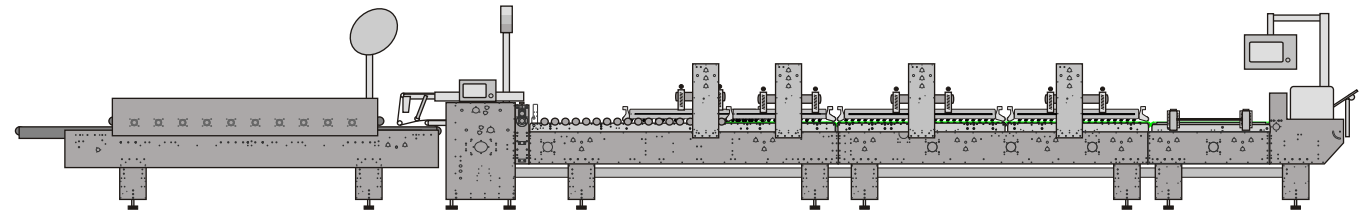
# SERTO 80 / 100

## MODULES OVERVIEW

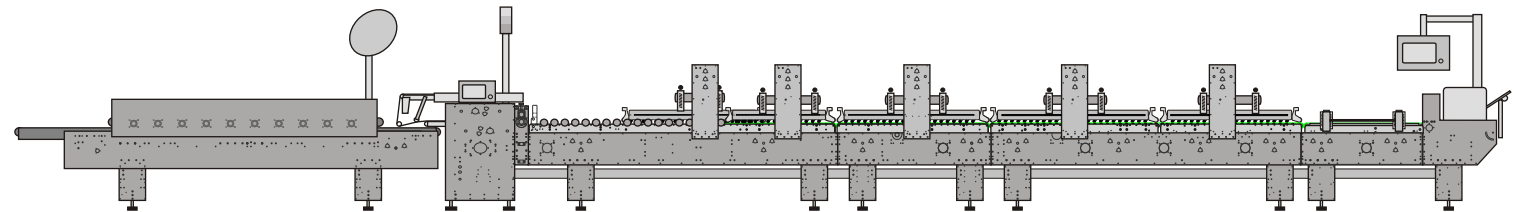
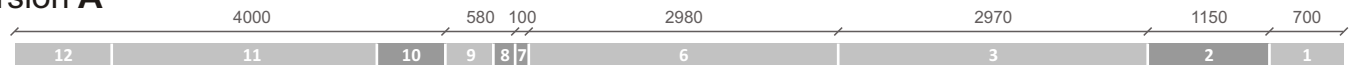
|    |                              |
|----|------------------------------|
| 1  | Feeder                       |
| 2  | Blank alignment module       |
| 3  | Prefolding section           |
| 4  | Folding module 1450          |
| 5  | 6 corner boxes module        |
| 6  | Final folding section        |
| 7  | Pressing unit                |
| 8  | Vertical ejector ( flipper ) |
| 9  | Transfer station             |
| 10 | Squaring device              |
| 11 | Compression station          |
| 12 | Delivery section             |

|  |                    |
|--|--------------------|
|  | Standard equipment |
|  | Optional           |

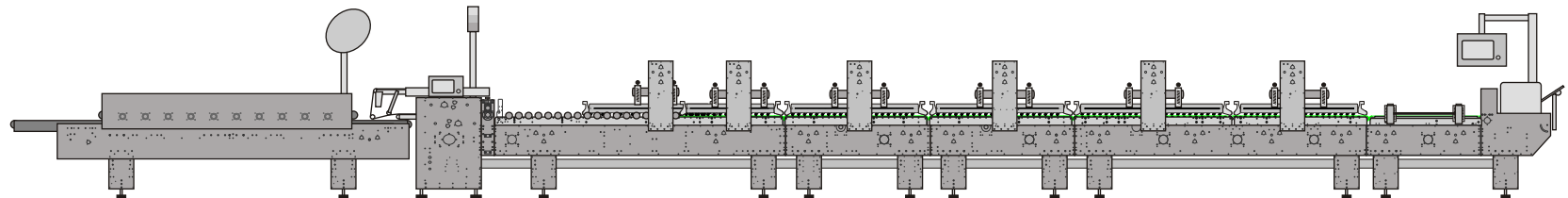
Dimensions in millimeters ( mm )



Version A



Version B

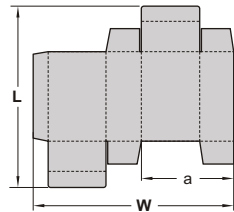


Version C



# JOBS DIMENSIONS

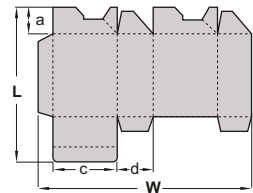
## STRAIGHT LINE



|                  | SERTO 80 | SERTO 100 |
|------------------|----------|-----------|
| L <sub>max</sub> | 900 mm   | 900 mm    |
| L <sub>min</sub> | 70 mm    | 70 mm     |
| W <sub>max</sub> | 800 mm   | 1000 mm   |
| W <sub>min</sub> | 75 mm    | 75 mm     |
| a <sub>min</sub> | 35 mm    | 35 mm     |

W<sub>min</sub> = 45mm / 1,77 in  
with SMALL BOX ATTACHMENT

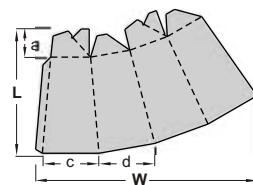
## LOCK BOTTOM



|                  | SERTO 80     | SERTO 100     |
|------------------|--------------|---------------|
| L                | 90 - 900 mm  | 90 - 900 mm   |
| W                | 147 - 800 mm | 147 - 1000 mm |
| c <sub>min</sub> | 40 mm        | 40 mm         |
| d <sub>min</sub> | 30 mm        | 30 mm         |
| a <sub>min</sub> | 20 mm        | 20 mm         |

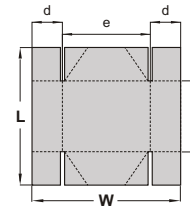
W<sub>min</sub> = 110 mm / 4,33 in  
with SPECIAL ATTACHMENT

## CONICAL TYPE



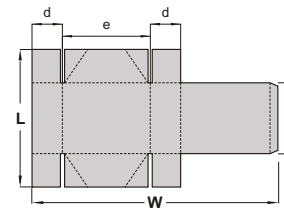
|                  | SERTO 80     | SERTO 100     |
|------------------|--------------|---------------|
| L                | 90 - 900 mm  | 90 - 900 mm   |
| W                | 160 - 800 mm | 160 - 1000 mm |
| c <sub>min</sub> | 40 mm        | 40 mm         |
| d <sub>min</sub> | 35 mm        | 35 mm         |
| a <sub>min</sub> | 20 mm        | 20 mm         |

## FOUR CORNER ( k4 version required )



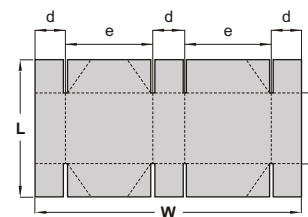
|                  | SERTO 80     | SERTO 100     |
|------------------|--------------|---------------|
| L                | 120 - 900 mm | 120 - 900 mm  |
| W                | 130 - 800 mm | 130 - 1000 mm |
| c <sub>min</sub> | 80 mm        | 80 mm         |
| d                | 20 - 200 mm  | 20 - 200 mm   |
| e <sub>min</sub> | 90 mm        | 90 mm         |

## FOUR CORNER WITH LID ( k4 version required )



|                  | SERTO 80     | SERTO 100     |
|------------------|--------------|---------------|
| L                | 120 - 900 mm | 120 - 900 mm  |
| W                | 230 - 800 mm | 230 - 1000 mm |
| c <sub>min</sub> | 80 mm        | 80 mm         |
| d                | 20 - 200 mm  | 20 - 200 mm   |
| e <sub>min</sub> | 90 mm        | 90 mm         |

## SIX CORNER ( k6 version required )



|                  | SERTO 80     | SERTO 100     |
|------------------|--------------|---------------|
| L                | 120 - 900 mm | 120 - 900 mm  |
| W                | 240 - 800 mm | 240 - 1000 mm |
| c <sub>min</sub> | 80 mm        | 80 mm         |
| d                | 20 - 200 mm  | 20 - 200 mm   |
| e <sub>min</sub> | 90 mm        | 90 mm         |